



File Code: 1950/2210

Date: November 22, 2010

Dear Interested Party:

The Westside Ranger District, Caribou-Targhee National Forest, is currently conducting NEPA analysis on the Michaud, Midnight, and Pocatello cattle allotments. The allotments are located approximately 10 miles south and east of Pocatello, Idaho, in portions of T7S, R34E; T8S, R34E; T9S, R34E; T8S, R35E; and T9S, R35E (see attached map).

The allotments became part of the National Forest System Lands in 1907 and 1908. The allotments supported both sheep and cattle until 1945 when sheep were removed. These allotments jointly cover approximately 46,000 acres along the west side of the Caribou National Forest. Currently the Michaud allotment graze 177 cattle from July 1 to September 30, the Midnight Allotment graze 329 cattle from July 1 to September 2 and the Pocatello Allotment graze 1199 cattle from June 1 to October 10.

### **Purpose and Need**

The NEPA analysis supporting grazing of these three cattle allotments is outdated and the re-authorization decisions were signed prior to the completion of the 2003 Revised Forest Plan.

### **Proposed Action**

The proposed action is to authorize continued grazing within the Michaud, Midnight, and Pocatello Allotments. The Environmental Analysis (EA) will determine if grazing is still suitable for the area, and outline any mitigation necessary to respond to current grazing impacts. The allotments are adjacent to one another so they will be covered under one EA.

### **Decision Framework and Public Input**

This proposal will be analyzed within the framework of an Environmental Assessment (EA) and either a Finding of No Significant Impact will be issued, or an intent to prepare an Environmental Impact Statement (EIS) will be submitted to the Federal Register.

I am interested in receiving your comments on this proposed action by January 4, 2011. Please submit written comments to:

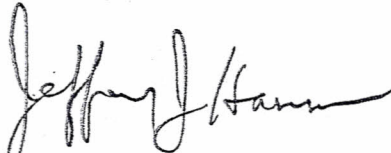


Jeffery J. Hammes, District Ranger  
Westside Ranger District  
4350 Cliffs Drive  
Pocatello, ID 83204

Electronic comments may be submitted in rich text format (.rtf), or Word (.doc) to [comments-intermtn-caribou-targhee-westside@fs.fed.us](mailto:comments-intermtn-caribou-targhee-westside@fs.fed.us).

To provide receive additional information regarding this project, please contact me or Hans Bastian (project lead) at the Westside Ranger District, 4350 Cliffs, Pocatello, ID 83204 during normal business hours. You may reach us by phone at 208-236-7500 or e-mail at: [jhammes@fs.fed.us](mailto:jhammes@fs.fed.us).

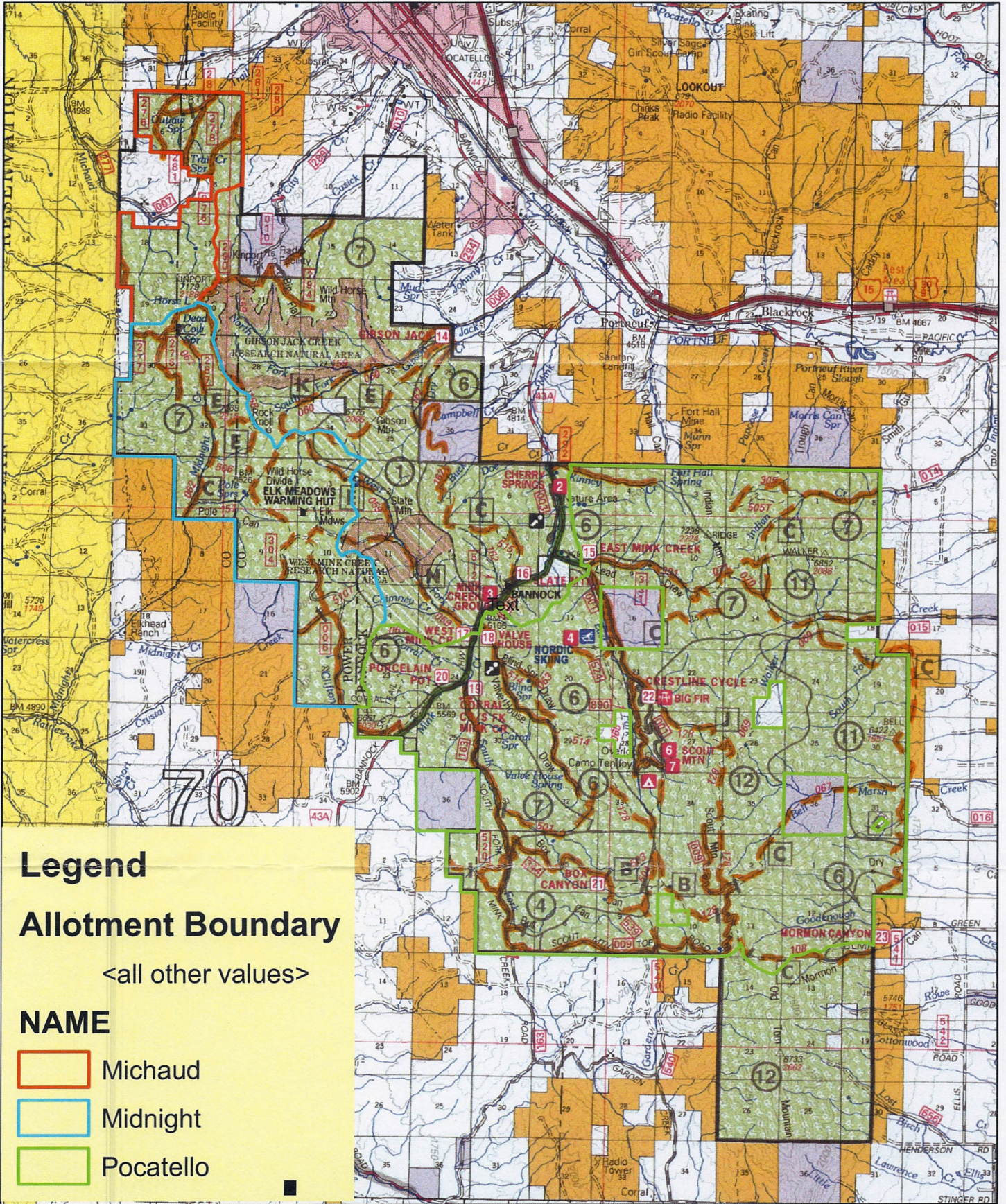
Sincerely,

A handwritten signature in black ink, appearing to read "Jeffery J. Hammes". The signature is fluid and cursive, with a long horizontal stroke at the end.

JEFFERY J. HAMMES  
District Ranger



# 2011 Lower Portneuf EA Analysis Area



2.5 1.25 0 2.5 Miles



