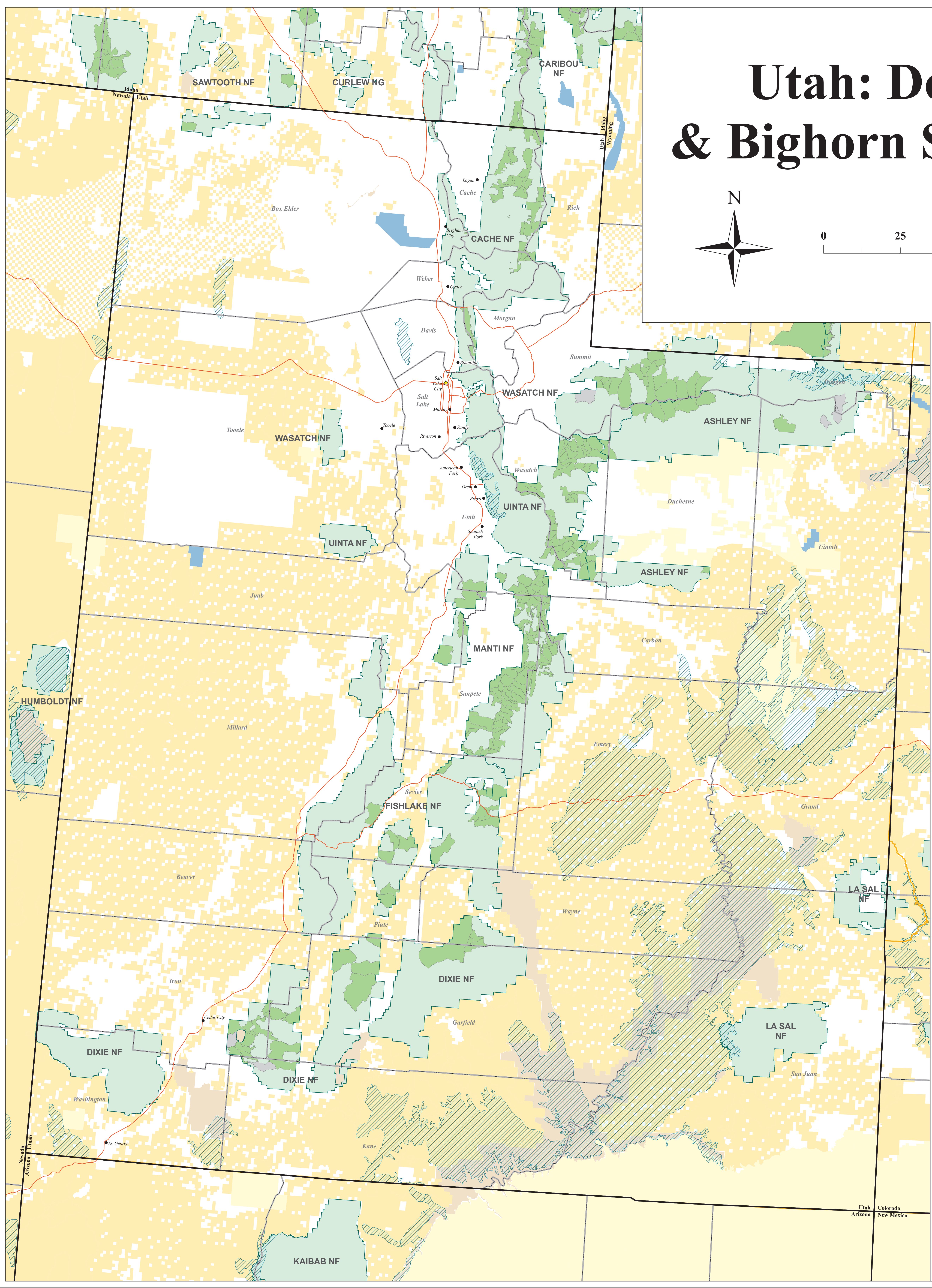
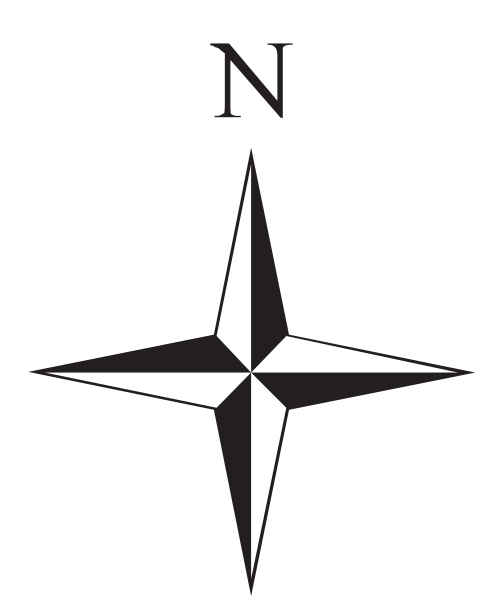


# Utah: Domestic Sheep & Bighorn Sheep Interaction



- \*\* Map Key \*\***
- Cities
  - Highways, Limited Access
  - ▭ State Boundaries
  - ▭ County Boundaries
  - ▭ National Forest System Lands: Regional Boundaries
  - ▨ Bighorn Sheep Occupied Habitat
  - ▭ National Forest System Lands: Domestic Sheep Grazing Allotment, Active
  - ▭ National Forest System Lands: Domestic Sheep Grazing Allotment, Vacant
  - ▭ National Forest System Lands: Administrative Boundaries
  - ▭ Department of Interior - National Park Service Lands
  - ▭ Department of Interior - Bureau of Indian Affairs Lands
  - ▭ Department of Interior - Bureau of Land Management Lands
  - ▭ Department of Interior - Fish & Wildlife Service Lands

D:\projects\western\_sheep\ut\_sheep.mxd - September 2008  
 Rocky Mountain Region (R2), Regional Office, Geospatial Services, Golden, Colorado  
 DRAFT: SEPTEMBER 2008  
 THIS INFORMATION CURRENTLY IS UNDER REVIEW AND DOES NOT MEET THE USDA QUALITY OF INFORMATION GUIDELINES.  
 THIS INFORMATION IS DISTRIBUTED SOLELY FOR THE PURPOSE OF PRE-DISSEMINATION PEER REVIEW UNDER APPLICABLE INFORMATION QUALITY GUIDELINES. IT HAS NOT BEEN FORMALLY DISSEMINATED BY THE FOREST SERVICE. IT DOES NOT REPRESENT AND SHOULD NOT BE CONSTRUED TO REPRESENT ANY AGENCY DETERMINATION OR POLICY.

***\* DRAFT COPY \****